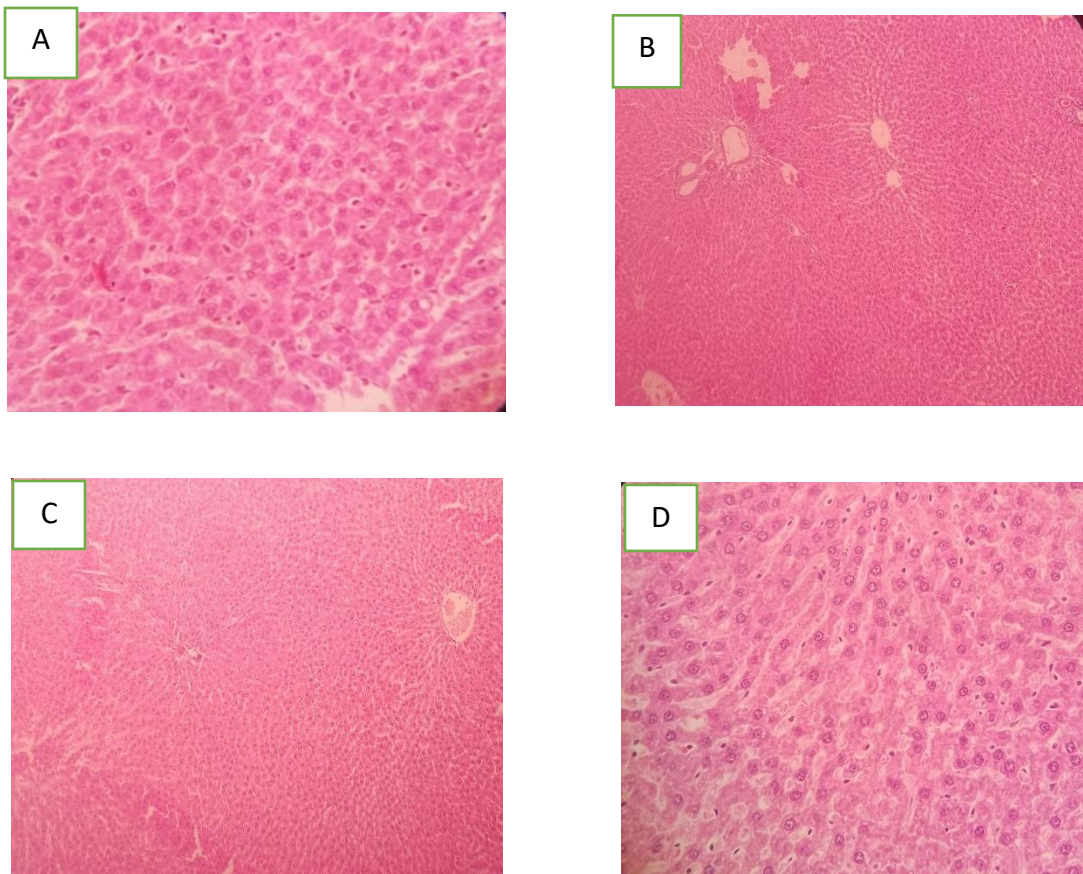
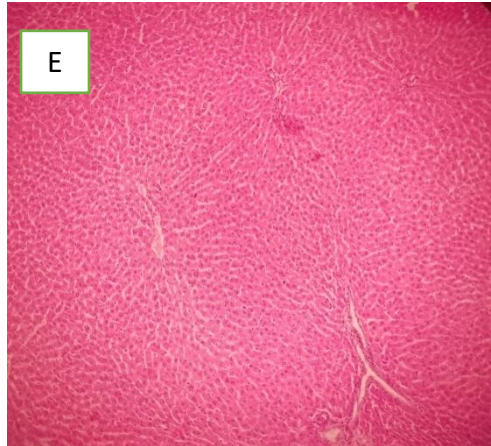


Figure 1: Allocation and Treatment Plan for Rat Bioassay

Figure 2: Histopathological Examination of Liver Tissues





A: G0- Lobules are intact. Hepatocytes are normal looking with central nuclei. Portal triads are normal.

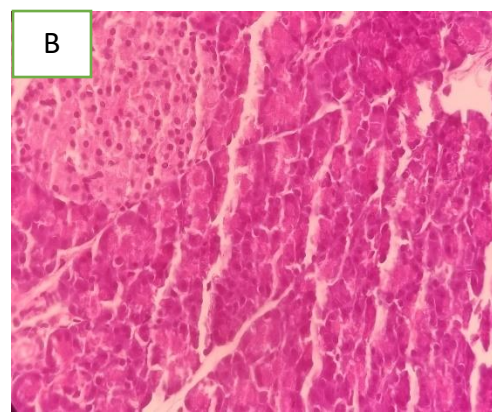
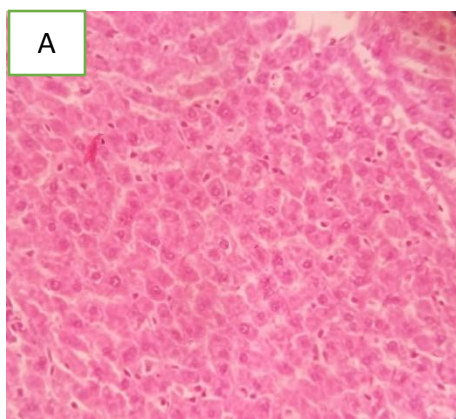
B: G1- Lobules are intact. Hepatocytes are normal looking with central nuclei. Portal triads are normal. No inflammatory process seen.

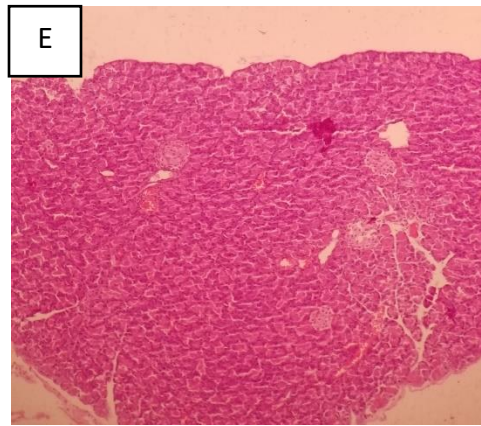
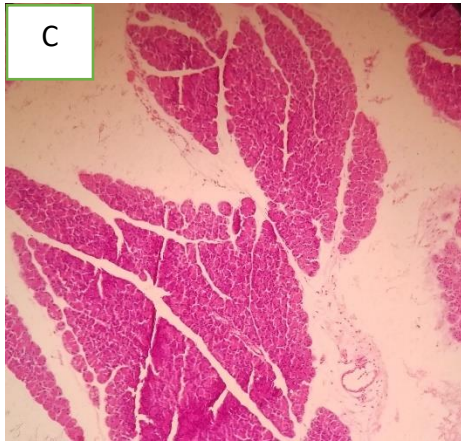
C: G2- Lobules are intact. Hepatocytes are normal looking with central nuclei. Portal triads are normal. No inflammatory process seen.

D: G3- Lobules are intact. Hepatocytes are normal looking with central nuclei. Portal triads are normal. No inflammatory process seen.

E: G4- Lobules are intact. Hepatocytes are normal looking with central nuclei. Portal triads are normal. No inflammatory process seen.

**Figure 3: Histopathological Examination of Pancreatic Tissues**





A: G0- Pancreatic lobules with acini. The cells are pyramidal shape with rounded basal nuclei. The Islets of Langerhans are present.

B: G1- Pancreatic lobules with acini. The cells are pyramidal shape with rounded basal nuclei. The Islets of Langerhans are present. No inflammatory process seen.

C: G2- Pancreatic lobules with acini. The cells are pyramidal shape with rounded basal nuclei. The Islets of Langerhans are present. No inflammatory process seen.

D: G3- Pancreatic lobules with acini. The cells are pyramidal shape with rounded basal nuclei. The Islets of Langerhans are present. No inflammatory process seen.

E: G4- Pancreatic lobules with acini. The cells are pyramidal shape with rounded basal nuclei. The Islets of Langerhans are present. No inflammatory process seen.